

KNAUER AZURA® Analytical HPLC

For Analytical HPLC of radioactive substances

KNAUER AZURA® Analytical HPLC

The perfect completion for your Modular-Lab system - The versatile gradient KNAUER AZURA® analytical HPLC system



Description

The laboratory equipment of the Modular-Lab family has been specifically designed to allow the production of a variety of radiotracers. The quality control of the products is an essential step of this production. Therefore the KNAUER AZURA® analytical HPLC gives a perfect solution for your quality control process.

The HPLC system consists of the quaternary low pressure gradient AZURA® pump P 6.1L including 4 channel degasser, AZURA® UV/VIS Detector UVD 2.1L (optional PDA), AZURA® Eluent tray E 2.1L, a manual 6-port/2-channel injection valve (optional autosampler), AZURA® Capillary Start-up kit, Analytical UV Flow Cell, the Interface Box IFU 2.1 and comes with the ClarityChrom® CDS software in combination with FlowCountPRO and computer.

The timeless, elegant design of the AZURA® elements is optimized for user-friendly operation. The removable front gives an easy access to the functional modules. Guides for capillaries and tubings protect sensitive connections. Three colored LEDs indicate the element's status at one glance. Advanced safety aspects make working with AZURA® safer than ever: The intelligent drainage system guides liquid from any leak to the leak sensor that stops the system as soon as liquid is detected. Leaked liquid will be collected.

The AZURA® gradient HPLC system is optimized for use with Eckert & Ziegler's MiniScanPRO and FlowCountPRO.

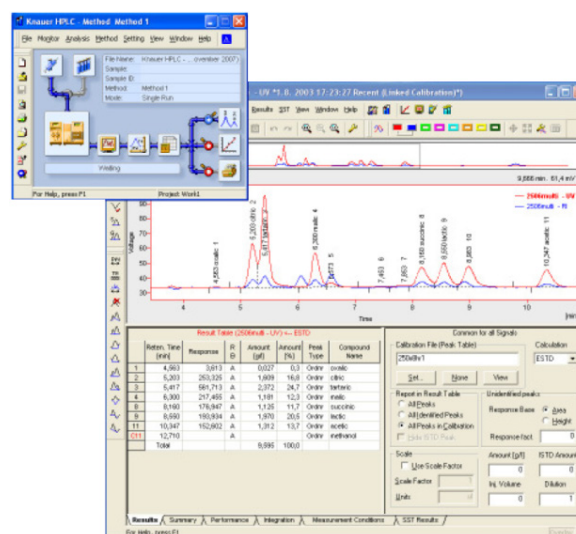
Advantages

The AZURA® gradient HPLC system is a perfect, cost-efficient complement to your Modular-Lab system. Pharmacopoeia-defined analysis methods for certain tracers are available (further information upon request) and support for establishing user methods can be offered. The

multifunctionality of the system allows routine analysis for PET and other tracers based on positron, beta and gamma emitting nuclides. For many tracers a ready-to-go operating routine is available, but also customized solutions for your analytical problems can be developed.

ClarityChrom® Software

The AZURA® gradient HPLC system runs with ClarityChrom®, an easy-to-use Chromatography Data System for workstations. The optional extensions for GC control, PDA, GPC and MS allow using the software for a wide spectrum of applications. Many different parameters such as pressure, flow rate, radioactivity and UV absorption can easily be monitored online. Reports containing all relevant data and information are created automatically after each run. All data is recorded according to GMP requirements.



ClarityChrom® Software User Interface

Disclaimer: This brochure has been originally created by the Manufacturer (Eckert & Ziegler) and has not been changed by the Distributor (Imaxeon)

KNAUER AZURA® Analytical HPLC

Key Features

- Reliable and GMP compliant
- Stable baseline due to the integrated degasser
- Gradient pump: pressure transducer and solvent mixing chamber for low pulsation eluent supply
- Leakage protection and management
- Detection: single wavelength, range from 190 - 750 nm
- Flow rates from 10 µl/min up to 10 ml/min

Technical Data

Module Characteristics	
AZURA® Pump P 6.1L LPG	Dimensions: 361 x 208.2 x 523 mm (W x H x D); 12.7 kg Pump type: quaternary low pressure gradient AZURA® P 6.1 L pump module with 10 ml stainless steel pump head, mixing chamber, and 4-channel degasser Solvent delivery: Flow Rate Range: 0.001 - 10 ml/min; 0.001 ml/min increments; Flow rate Accuracy: ± 0.25 %; Flow Rate Precision: ≤ 0.04 % RSD or 0.008 min SD (whichever is greater) Gradient accuracy: ± 0.3 % (at 1 ml/min, 150 bar ethanol/caffeine tracer), ± 2 % (1-99 %, measured at 5-50 % of the flow range, water/caffeine tracer); Gradient precision: < 0.1% RSD at 1 ml/min, 0.5 % RSD overall, based on retention time at constant room temperature
AZURA® UV/VIS Detector UVD 2.1L	Dimensions: 361 x 158 x 523 mm (W x H x D); 5.9 kg Detector type: Variable single wavelength UV/VIS detector; Light source: Deuterium (D2) lamp with integrated GLP chip; Wavelength range 190 - 750 nm; Wavelength accuracy: ± 2.5 nm; Wavelength precision: 0.3 nm (ASTM E275-93); Noise: ± 15 µAU at 254 nm (ASTM E1657-98); Drift: 300 µAU/h at 254 nm (ASTM E1657-98); Linearity: > 2.0 AU at 274 nm (ASTM E1657-98); Control: Digital - LAN-DHCP, remote connector; Analog - wavelength control
AZURA® Eluent tray E 2.1L	Dimensions: 364 x 85 x 523 mm (W x H x D); 3.4 kg Storage of up to 6 x 1000 ml bottles; Inlay removable for cleaning; Removable front with capillary guide; Drainage system
Manual 6-port/2-position injection valve	Manual injection valve; Stainless steel; Including accessories; Autosampler on request (optional)
Analytical Flow Cell UV	Body Material: stainless steel with heat exchanger; Path Length: 10 mm; Flow Cell Volume: 10 µl; Inner diameter: 1.1 mm
Additional Information	
Power Supply	100 - 240V; 50 - 60 Hz; max. 100 W
Software	ClarityChrom® CDS, single instrument license PDA option: 3D chromatogram, peak purity analysis, spectrum search in self-made or commercial spectra library
Included HPLC Kit	HPLC column; FlowCount ^{PRO} remote detection unit; Detector; High voltage cable; Shielded holder and Flow Cell assembly; Mini PC; PEEK tube; PEEK fittings; PEEK sample loop; Luer adapters; Flangeless fitting nuts; FEP tube; Cutting pliers for capillaries; Vial; Laboratory bottles

Eckert & Ziegler Eurotop GmbH

Robert-Rössle-Strasse 10
13125 Berlin
Germany
Phone: +49 30 941084 197
Fax: +49 30 941084 470

medical@ezag.de
www.medical.ezag.com

Your contact in USA & Canada: Eckert & Ziegler Radiopharma, Inc.

25 Upton Drive
Wilmington, MA 01887
USA
Phone: +1 508 497 0060
Fax: +1 508 497 0061

infoRAU@ezag.com
www.medical.ezag.com

Australian Distributor

Imaxeon Pty Ltd
ABN 93 093 950 906

Unit 1, 38 - 46 South Street,
Rydalmere, NSW 2116

PP-ECK-AU-0029-1
Date of preparation: July 2024

