

Radiation Hotlabs

From Actinium to Zirconium
The Alpha, Beta and Gamma of labs



Introduction

At Bayer we understand the critical role that hot labs play in molecular imaging research and diagnostics.

- ▶ With our qualified Nuclear Medicine Technologists, we are dedicated to providing you with reliable solutions that meet your specific needs.
- ▶ We have expertise in the design, fabrication and installation of radioactive laboratories.
- ▶ With a strong focus on
 - ▶ high quality
 - ▶ radiation safety and
 - ▶ optimised workflow

We are excited to offer you cutting-edge solutions to enhance your molecular imaging capabilities.

“

The Hot Lab provided by Bayer stands out as the most well designed and expertly installed workspace I've had the privilege to work in. The entire experience was smooth and easy from start to finish and the result was outstanding.

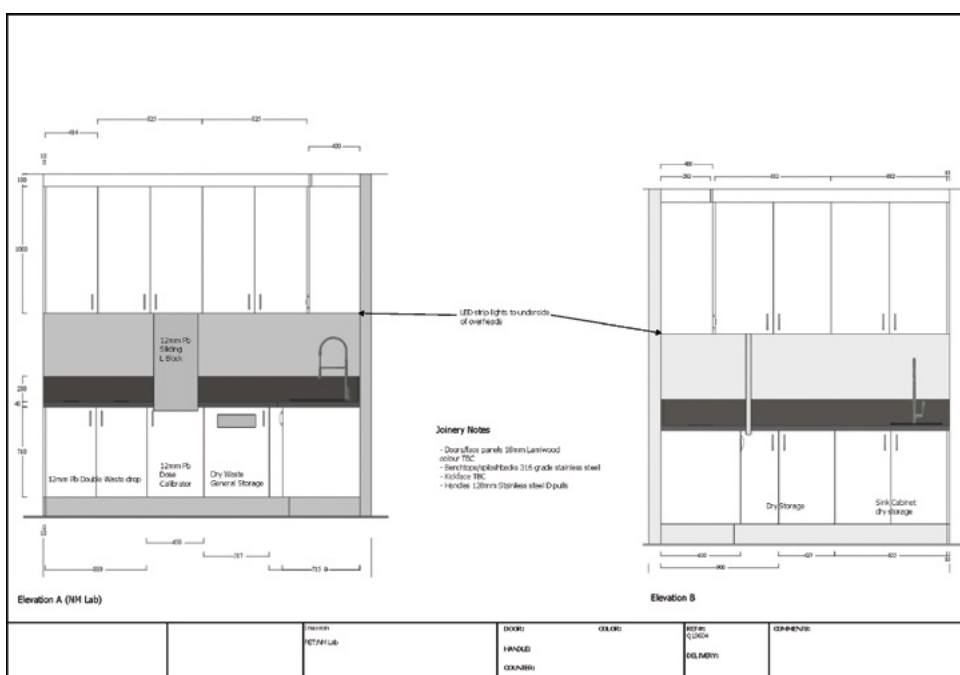
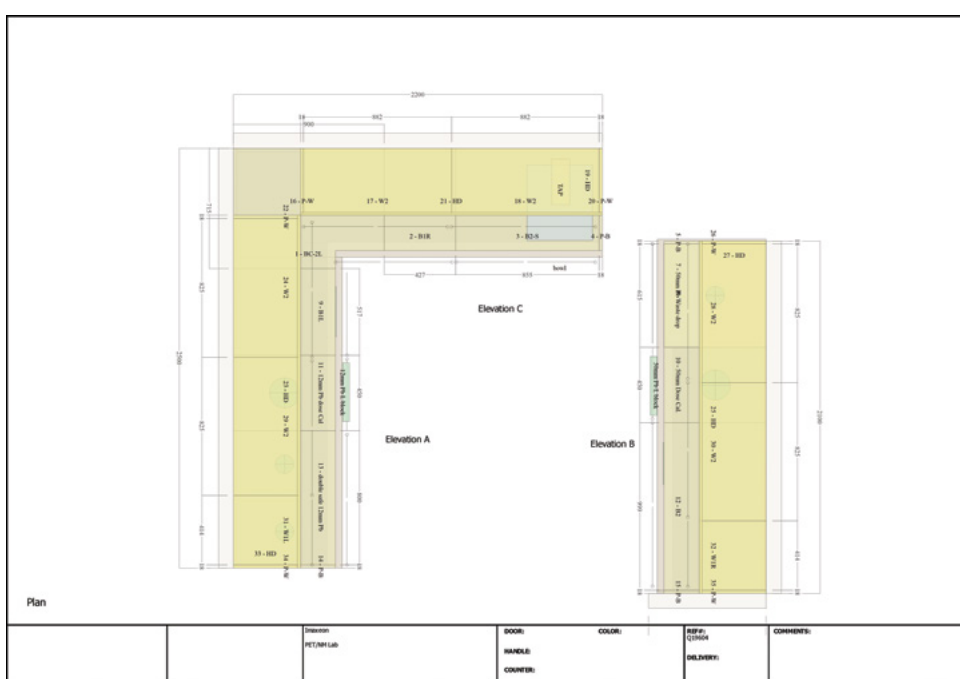
Jason Callaghan, Chief Nuclear Medicine Technologist, Melbourne Theranostic Innovation Centre.

”

▶ Concept Design

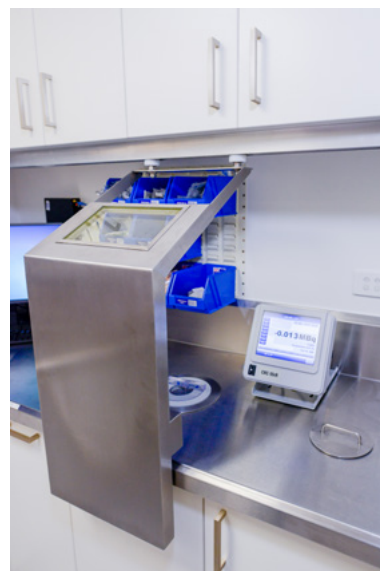
We understand that each molecular imaging facility is unique. Therefore, our team collaborates closely with you to understand your specific requirements, workflow patterns, and available space. We will then tailor the design and fabrication of your hot lab to optimise productivity, efficiency, and safety.

▶ Examples of a Hot Lab design.



Radiation Safety Measures

- ▶ Safety is our top priority.
- ▶ Our hot labs are meticulously designed according to the latest building and ARPANSA guidelines to minimise radiation exposure risks for your staff, patients, and the surrounding environment.¹
- ▶ We adhere to strict safety guidelines¹ and incorporate advanced shielding materials, ventilation systems, and monitoring technologies to maintain a secure working environment.

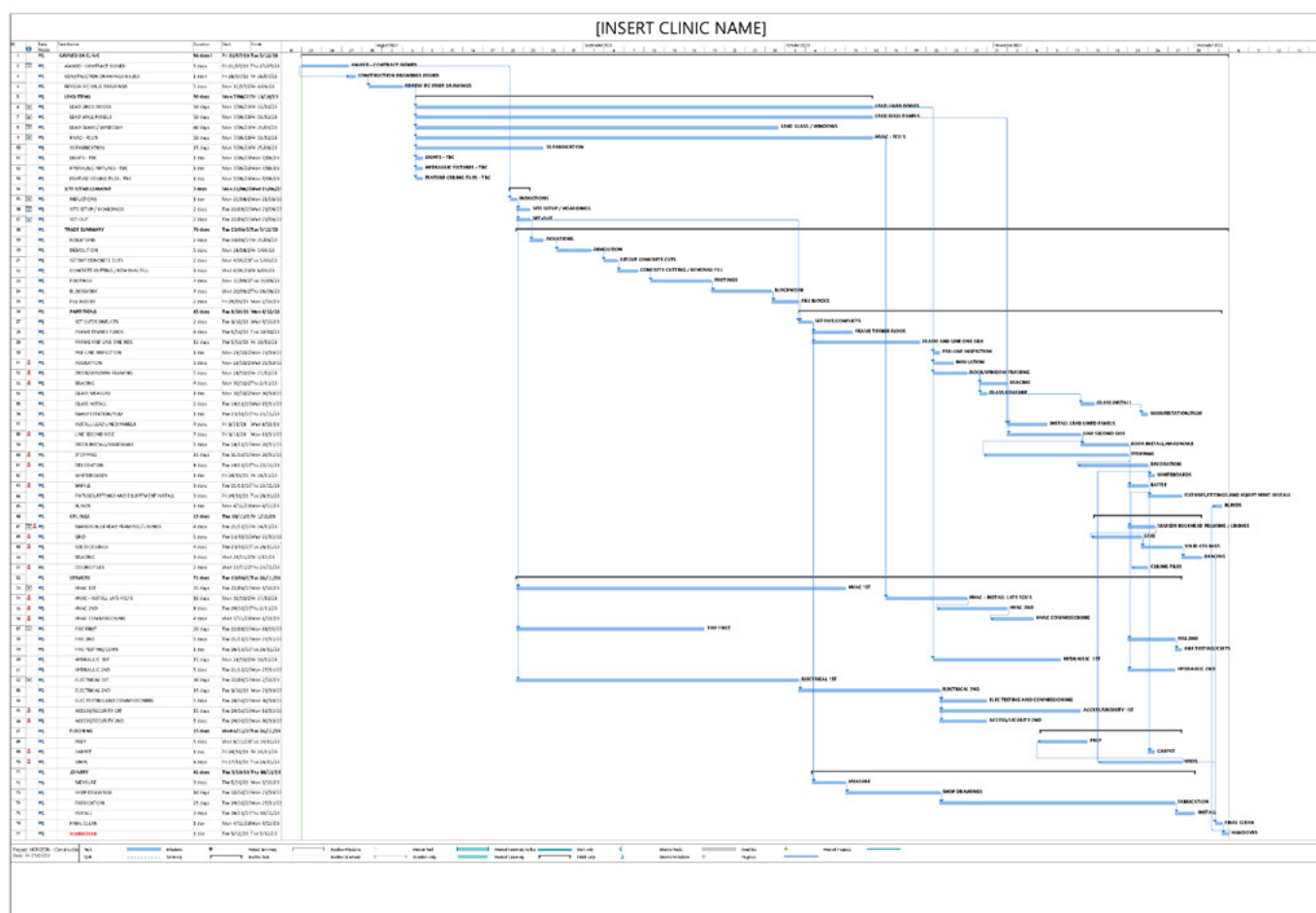


Workflow Optimisation

- ▶ We recognise the importance of seamless workflows in your clinical processes.
- ▶ Our hot labs are thoughtfully designed to enhance efficiency, with careful consideration given to kit and dose preparation, equipment placement, and ergonomics.
- ▶ By streamlining your workflow, we aim to save you valuable time and resources.

Installation & Commissioning

Once your design and requirements has been decided upon, our team of dedicated team of engineers will organise a date to install your Hot Lab, commission and hand over to you. A schedule similar to the one shown will be created to ensure you are appraised of every step in the process.



Reference: 1. <https://www.arpansa.gov.au/regulation-and-licensing/regulatory-publications/radiation-protection-series/guides-and-recommendations> last accessed 10 Nov 2023





MOLECULAR
IMAGING

Bayer Australia Ltd
ABN 22 000 718 504

875 Pacific Highway
Pymble NSW 2073

Imaxeon Pty Limited
ABN 93 093 950 906

Unit 1, 36 – 48 South Street,
Rydalmere NSW 2116