

MiniScanPRO

GMP compliant radio-TLC scanner

MiniScanPRO is a GMP compliant and versatile, cost-efficient radio-TLC scanner for the reliable detection of radionuclides via TLC, HPLC and optional MCA



Technology

MiniScanPRO is a versatile TLC scanner for the reliable detection of radioactivity for radioisotopes on narrow strips and plates. The system is ideal for routine quality control of ^{68}Ga , ^{18}F (including FDG), $^{99\text{m}}\text{Tc}$ and ^{123}I radiopharmaceuticals and most others. MiniScanPRO has two independent channels, one for TLC and one for HPLC, which can be connected to any available detector option.

The TLC strip loaded with the sample is placed on a stage which moves under the fixed radiodetector to record the chromatogram.

The second channel can be used for radiodetection in combination with all common HPLC systems. Depending on the nuclide, the optimal detector is selected from a variety of detectors. A combination of radiodetectors, both PIN diode and photomultiplier, etc. may be used for measurements of most radionuclides including ^{68}Ga , ^{18}F , ^{125}I , ^{131}I , $^{99\text{m}}\text{Tc}$, ^{90}Y , ^{177}Lu , ^{64}Cu and ^{111}In .

Several scan speeds allow the selected TLC detector to measure a wide range of activities from 10 nCi to 100 μCi (370 Bq - 3.7 MBq) depending on the detector choice. Analog and digital signals are provided for interfacing MiniScanPRO with existing chromatography data systems. The included RaPET-Lab Software can be used for workflow management, data acquisition and report generation.

Applications

- Routine quality control of radiopharmaceuticals containing ^{68}Ga , ^{177}Lu , ^{90}Y , ^{18}F , $^{99\text{m}}\text{Tc}$, ^{123}I and other radionuclides
- TLC of radiopharmaceuticals labeled with gamma, high energy beta and positron emitters for R&D
- In-process TLC analysis of reaction mixtures
- HPLC chromatography of nuclides
- Radionuclidic purity assay with optional MCA

DISCLAIMER: This is original material from Eckert & Ziegler and has not been altered in any way by Bayer.

RaPET-Lab Workflow Management Software

RaPET-Lab is a comprehensive software package for the automated execution of full processes of measurement, evaluation and quality checks in an analytical laboratory. A workflow consisting of several tasks can be executed in a predetermined order, generating an unchangeable report. This software is very reliable and easy-to-use. It consists of a GMP database ensuring GMP compliant documentation and also adhering to 21 CFR part 11.

Features and Benefits

- Easy-to-use system with maximum flexibility and automatic positioning system
- Control via PC
- Compatible with existing chromatography systems utilizing analog output of the MiniScanPRO
- Wide range of detectors available for various applications
- Capable of operating two detectors simultaneously for different applications or in coincidence mode (radio-HPLC mode)
- Variable scan speeds
- Easy system set-up and maintenance
- All parameters, such as threshold (for background, energy window, lower and upper discrimination), high voltage, integration time and plate length are accessible and modifiable
- RaPET-Lab software plugins available for tray movement, measurement and quality control evaluation

MiniScanPRO+ including Multi Channel Analyzer

As an additional feature Eckert & Ziegler offers the MiniScanPRO equipped with a Multi Channel Analyzer (MCA) and the appropriate NaI detector of spectroscopy quality to cover a range of 30 - 1500 keV. The detector is installed inside the device with extra lead shielding.

MiniScanPRO

Inputs

Up to two PMT-based radiodetectors, up to two diode radiodetectors and two analog channels

Outputs

Up to two user-selectable analog rate signals (ranges of 10 mV, 100 mV, 1 V, 5 V) with 16-bit resolution, up to two TTL pulse outputs

Detectors

The MiniScanPRO uses specially configured photomultiplier based detectors to detect gamma, high energy positron or beta emitters at both high and low levels of activity. Background interference is reduced with fully variable energy window settings. The following radio-TLC detectors are available:

Type	
FC-3100	Nal/PMT based detector is a low energy gamma (10 – 60 keV) detector used primarily for ¹²⁵ I.
FC-3200	Nal/PMT based detector is a high energy gamma (60 - 1500 keV) detector used in most nuclear medicine applications.
FC-3600	Plastic Scintillator/PMT based detector is ideal for the detection of high energy beta and positron emitters such as ³² P, ⁹⁰ Y, ¹⁸ F, ¹¹ C, ¹³ N. (> 30 keV)

Technical Specifications

Dimension: 356 x 197 x 445 mm / 14" x 7.8" x 17.5" (W x D x H)

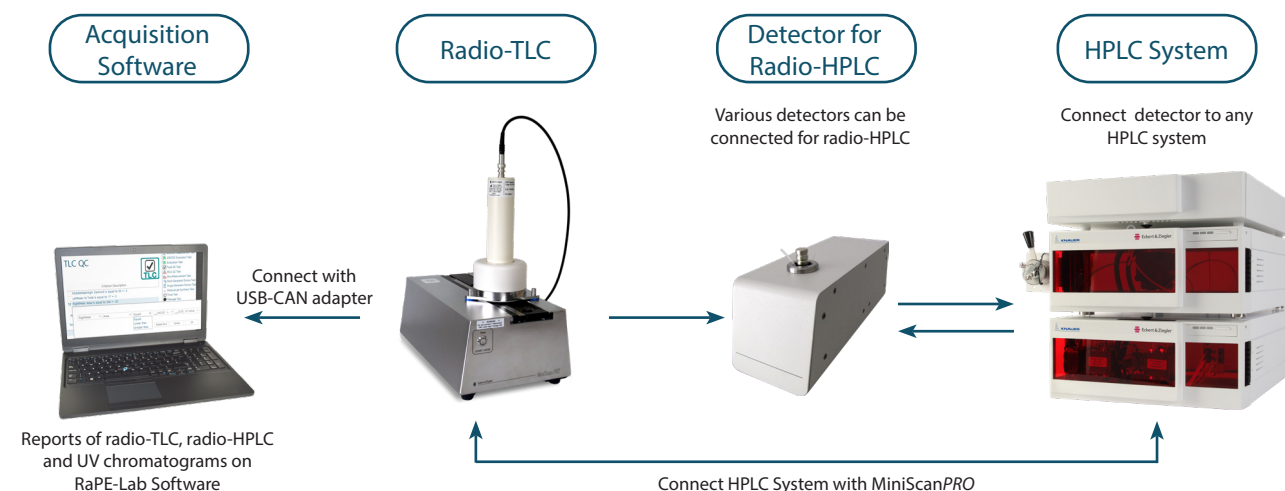
Weight: 11.9 kg / 26.2 lbs (MiniScanPro) or 19.0 kg / 41.9 lbs (MiniScanPro+ with MCA)

Upgrade your MiniScanPRO to a radio-HPLC detection system

The MiniScanPRO can be operated as TLC scanner and radio-HPLC detector simultaneously. Any combination of diode and PMT detectors and any HPLC System can be connected to the MiniScanPRO for radio-HPLC. By this you can easily upgrade your MiniScanPRO to a complete TLC and HPLC solution.

Check our HPLC-Scan fact sheet to learn more about the available radio-HPLC detectors, detector holders and flow cells.

Figure shows an example of a complete TLC and HPLC solution:



**Eckert & Ziegler
Eurotope GmbH**

Robert-Rössle-Strasse 10
13125 Berlin
Germany
Phone: +49 30 941084 197
Fax: +49 30 941084 470

eurotope@ezag.de
www.radiopharma.com



**Australian Authorised
Representative**

IMAXEON Pty Ltd
Unit 1, 38-46 South Street, Rydalmere
NSW 2116 Australia
Customer Service : 1800 633 723

ABN 93 093 950 906

www.radiology.bayer.com.au

PP-ECK-AU-0009-2
Date of Preparation: Nov 2023