



Power injection versus manual injection.

What a contrast!



Clear Direction.  From Diagnosis to Care.

medrad® MRXperion
MR Injection System

Scientific Evidence of the Benefits of Power Injection

To achieve successful contrast-enhanced MR procedures, accurate and repeatable contrast agent (e.g. disodium gadoxetate, gadobutrol) administration is necessary. In order to compare outcomes from power injection with MEDRAD MRXperion MR Injection System (MRXperion) versus manual injection, Bayer performed two studies. The first one was a laboratory study to assess flow rates over time and their deviations.¹ The second study was conducted using animal testing (minipigs) to see the impact of contrast administration in time-resolved MR angiography² (4D-MRA).

Lab Study

Injector Administration

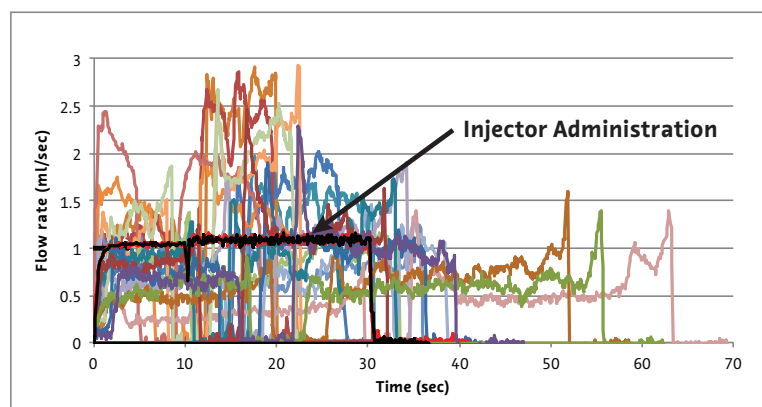
- Performed with the MRXperion, operated by an experienced Bayer technician.

Manual Administration

- Performed by ten technologists with at least five years of experience in clinical practice.

Results

- Identical flow rates over time with MRXperion
- High variability in flow rates over the whole course of the manual injection



Adapted from Fig. 2. Scenario 3: Injection profiles of 2 power injector administrations (arrow) in comparison to a series of manual administrations by multiple technologists using gadobutrol. Aim was 1ml/sec flow rate*. This example graph shows the consistency of achieving the desired flow rate when using MRXperion.

* most closely resembles clinical practice however please check Product Information for recommended flow rates.

¹ Endrikat J et al., Invest Radiol. 2018 Jan;53(1):1-5

² Budjan J et al., Eur Radiol. 2018 May;28(5):2246-2253

Animal Study

Injector Administration

- Performed with the MRXperion

Manual Administration

- All manual injections were performed by the same experienced technologist, who had performed more than 1,000 hand injections.

Results

- Highly reproducible administration with MRXperion
- Clearly defined and compact first-pass bolus shape with MRXperion
- Higher signal enhancement in all vessel regions with MRXperion

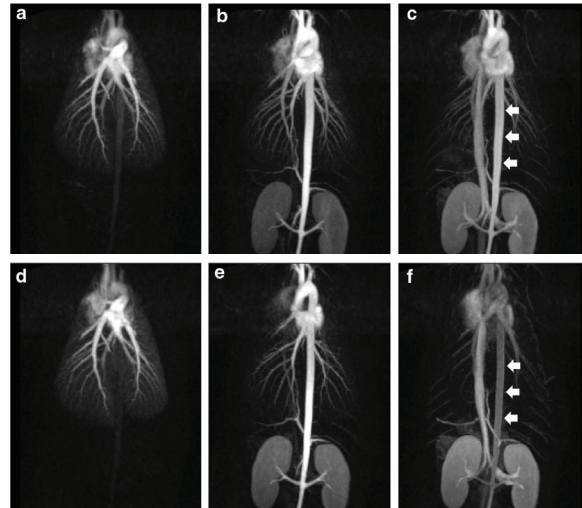


Fig. 1. Maximum intensity projections for different time points (a, d pulmonary artery; b, e arterial phase; c, f venous phase) of the subtracted 4D-MRA datasets for manual injection (top row a–c) and automated injection (bottom row d–f). Note the differences in contrast enhancement in the aorta (arrows) due to the prolonged bolus of the manual injection.

Accuracy and Repeatability

The results of the bench tests clearly demonstrate that MRXperion in comparison to manual injection, has been designed to achieve:



Higher flow rate accuracy and repeatability



Consistent contrast delivery



Standardisation of contrast administration protocols



Potentially improved diagnosis and treatment planning

Following both studies, contrast agent injection utilising the MRXperion MR injection system is more accurate, defined and repeatable versus manual injection. That means enhanced quality for operational consistency within your Radiology Department.

Efficient. Smart. My MR Injector.



Saves time



Increases confidence



Enhances patient care

Bayer reserves the right to modify the specifications and features described herein or to discontinue any product or service identified in this publication at any time without prior notice or obligation. Please contact your authorized Bayer representative for the most current information.

Bayer, the Bayer Cross, MRXperion are trademarks owned by and/or registered to Bayer in the U.S. and/or other countries. Other trademarks and company names mentioned herein are properties of their respective owners and are used herein solely for informational purposes. No relationship or endorsement should be inferred or implied.

© 2021 Bayer. This material may not be reproduced, displayed, modified or distributed without the express prior written consent of Bayer.



More information on
radiology.bayer.com.au

Imaxeon Pty Ltd
Rydalmere Metro Centre Unit 1,
38-46 South St Rydalmere NSW
2116 Australia

Phone: + 612 8845 4999
Fax: + 612 8845 4936
Customer Service: 1800 633 723



Manufacturer
Bayer Medical Care Inc.
1 Bayer Drive
Indianola, PA 15051-0780
U.S.A.

Phone: +1-412-767-2400
+1-800-633-7231
Fax: +1-412-676-4120



Authorized European
Representative
Bayer Medical Care B.V.
Horsterweg 21
6199 AC Maastricht Airport
The Netherlands
Phone: + 31 (0) 43-3585601
Fax: + 31 (0) 43-3656598