

# MRidium<sup>®</sup> 3860+

## MRI INFUSION PUMP

### QUICK REFERENCE GUIDE\*



\*Disclaimer: This guide has been created by the Manufacturer (Iradimed) and has not been changed in any way by the Distributor (Imaxeon). This guide is not a replacement for the operations manual and users should also refer to the operations manual.

# INITIAL SETUP

## 1.1| Selecting the Proper IV Set

a. Select the **1056-50 IV Set** when infusing from a bag or bottle fluid source (18mL).



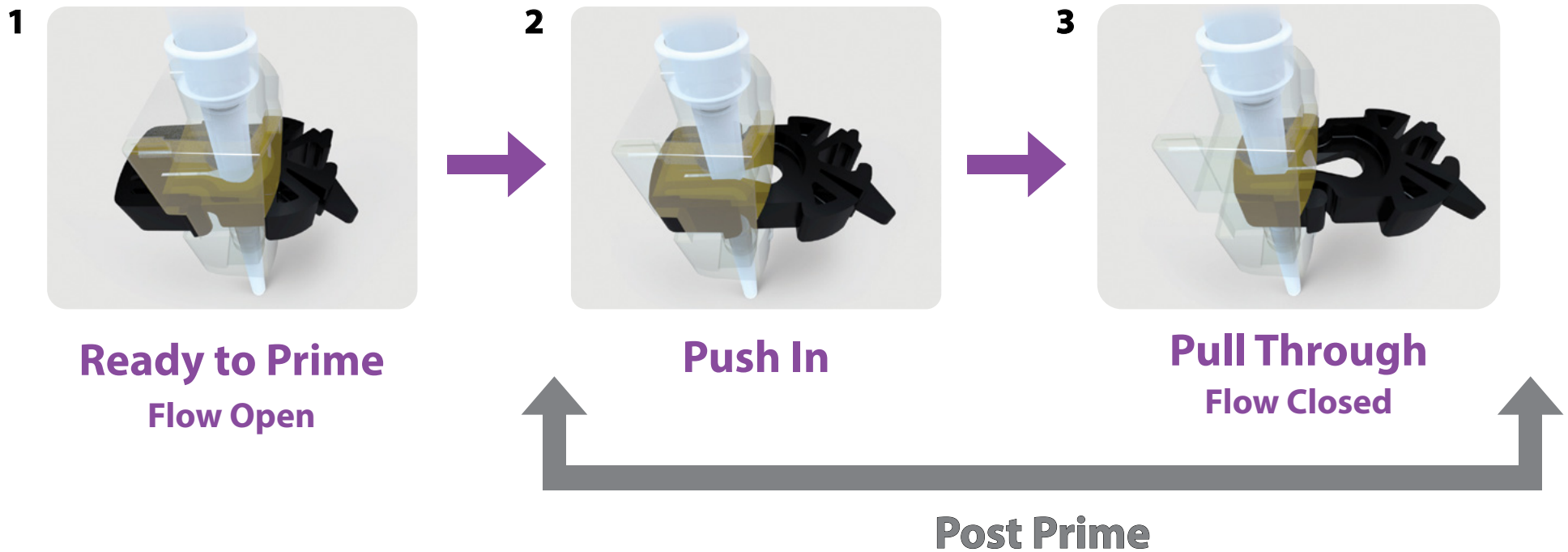
b. Select the **1057-50 IV Set** when infusing from a syringe fluid source (15mL).



c. Select the **1058-50 IV Set** as an extension or adapter for current IV Infusions (4mL).



## 1.2 | Proper Flow Clamp Positioning for Priming the IV Set



When priming, DO NOT STRETCH the Silicon Segment of the IV Set as this can cause freeflow issues during infusions.

# INITIAL SETUP

## 1.3 | Power **ON** the Pump

Press the ( I ) button as shown to power on the pump.



## 1.4 | Open the Door

“Push Down” on the **Purple Button**, “Pull Out” on the **Handle**.

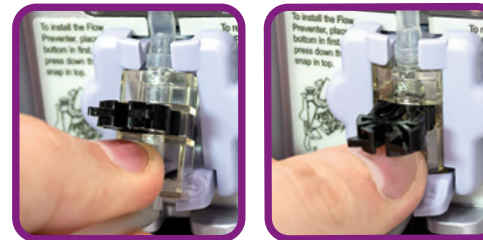


**Note:** Contact your biomed department if the door pin does not look as shown.

## 1.5 | Loading the IV Set

a. Insert the round **Disk** on the IV set into the "**Disk Slot**" on top of the pump.

b. Tilt up and insert the top of the **Black Flow Clamp** into the pump, then push to insert as shown. The clamp will click when secured. **DO NOT Push the Black Flow Clamp** which triggers a **Check Door Alarm** and may cause possible **Freeflow**.



c. Secure tubing inside **Bubble Detector**

d. Firmly **CLOSE THE DOOR**

Ensure **Door Handle** is **FULLY Latched, Open All Clamps, Vent Caps.**

No fluid flow should be in the drip chamber of the IV set or bubbles in a syringe.  
If fluid flow is present, clamp the IV tubing and repeat steps 1.2 on page 3.



# BEFORE PROGRAMMING CHANNELS A OR B

## 2.1 | Selecting Infusion Type: Drug Libraries A or B

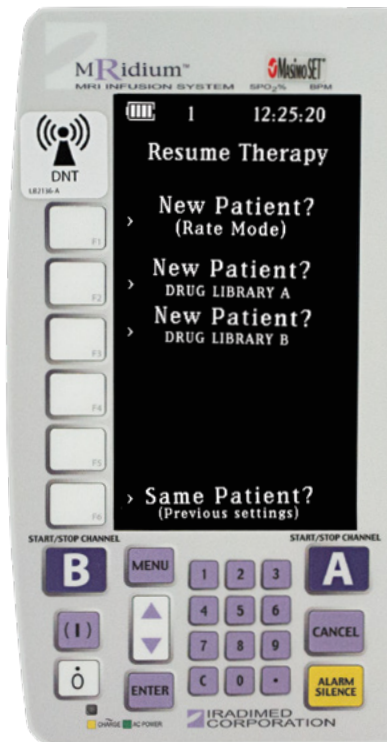
Use Library A for Channel A, and Library B for Channel B

a. Press the softkey next to **New Patient (Drug Library A)**

OR

Press the softkey next to **New Patient (Drug Library B)**

Startup Screen

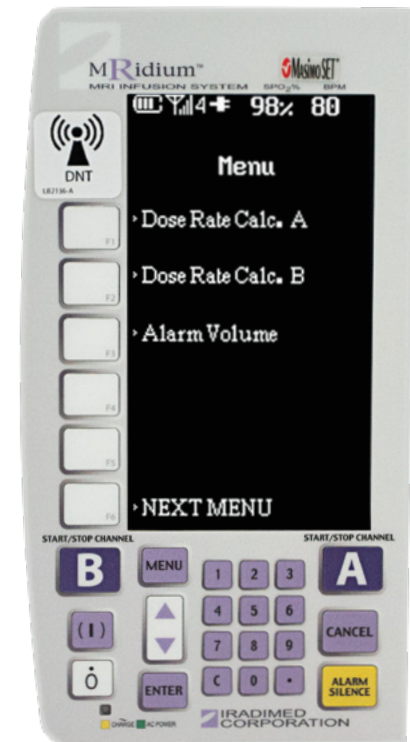


b. Press the softkey next to **Dose Rate Calc. A**

OR

Press the softkey next to **Dose Rate Calc. B**

Menu Screen



# PROGRAMMING CHANNEL A

## 2.2 | Selecting Medication: Drug Library A

a. Press the **UP** or **DOWN** arrow keys to scroll through listed medications. Press **ENTER** when the proper medication is highlighted.

b. Primary is highlighted, press **ENTER** again.

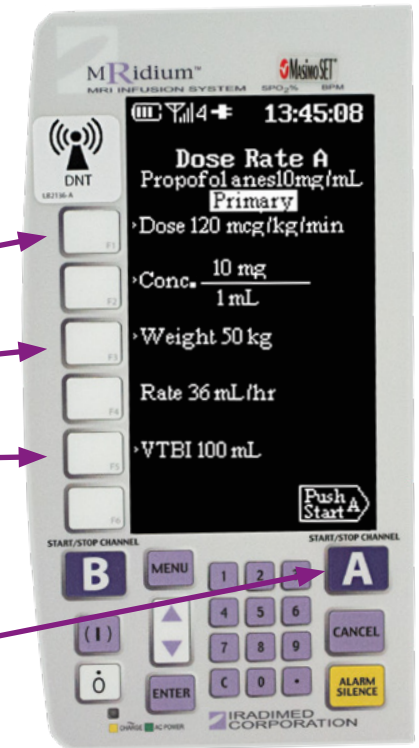
Program entries with **Numeric Keypad** such as:

- Dose; **ENTER**
- Weight (kg); **ENTER**
- VTBI; **ENTER**

c. **Push Start A** will appear when programmed correctly.



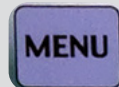
d. To start infusion, press the **Start/Stop A Button**.



# PROGRAMMING CHANNEL B

## 2.3 | Selecting Medication: Drug Library B

a. Press the **MENU** button.



b. Press **Dose Rate Cal. B** (Reference 2.1)

c. Press the **UP** or **DOWN** arrow keys to scroll through listed medication.  
Press **ENTER** when the proper medication is highlighted.

d. Primary is highlighted, press **ENTER** again.

Program entries with **Numeric Keypad** such as:

- Dose; **ENTER**
- Weight (kg); **ENTER**
- VTBI; **ENTER**

e. **Push Start B** icon will appear when programmed correctly.



f. To start infusion, press the **Start/Stop B Button**.





# PROGRAMMING BASIC INFUSIONS

## 3.1 | Rate Mode: Channel A

a. Press the softkey by “**New Patient- Rate Mode**” on Main Menu Screen.



(as shown in step 2.1)

b. Press the softkey by **RATE** on the screen

- Program RATE number using the **Numeric Keypad**
- Press the **ENTER** Key

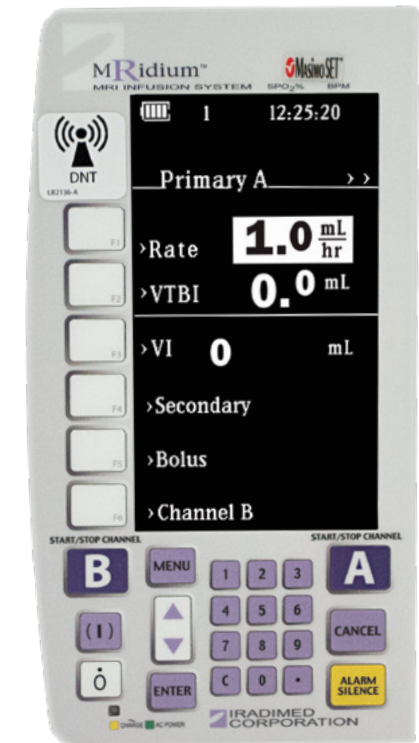
c. Press **VTBI** Softkey

- Program the VTBI using the **Numeric Keypad**
- Press the **ENTER** key

**Ready to Start** will appear at bottom of the screen.



d. Press the **Start/Stop A Button** to start infusion.



# PROGRAMMING BASIC INFUSIONS

## 3.2 | Rate Mode: Channel B

a. Press the softkey by **"New Patient- Rate Mode"** on Main Menu Screen.



(as shown in step 2.1)

b. Press the **Channel B** softkey

- Program RATE number using the **Numeric Keypad**
- Press the **ENTER** Key

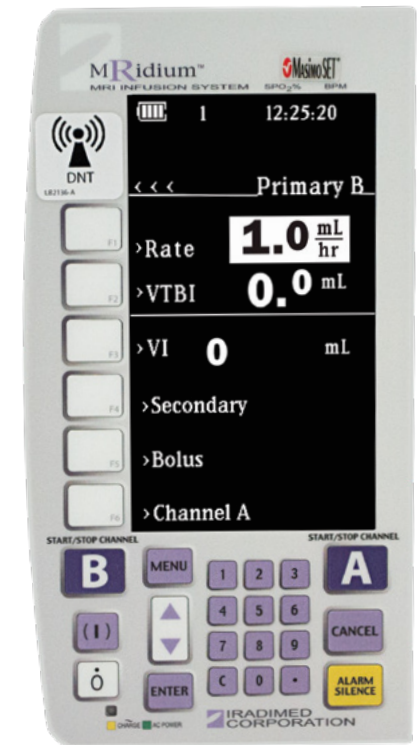
c. Press **VTBI** Softkey

- Program the VTBI using the **Numeric Keypad**
- Press the **ENTER** key

**Ready to Start** will appear at bottom of the screen.



d. Press the **Start/Stop B Button** to start infusion.



# TITRATING BASIC INFUSIONS

## 3.3 | Rate Mode: Channel A or B During Infusion In Progress

a. Press the softkey by **Channel A or B** at the bottom of the screen.

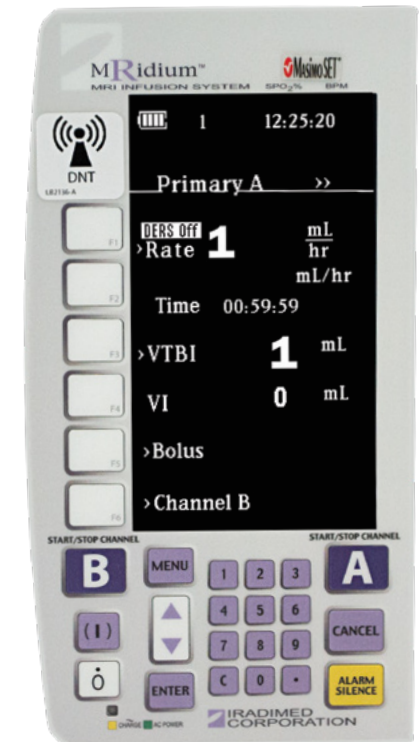
b. Press **Rate** softkey

- Program RATE number using the **Numeric Keypad**
- Press the **ENTER** Key

OR

c. Press **VTBI** Softkey

- Program the VTBI using the **Numeric Keypad**
- Press the **ENTER** key



# PROGRAMMING A BOLUS

## 4 | Proper Dose Error Reduction System (DERS) Bolus Programming\*

a. To program a bolus, press **Bolus Softkey A/B** or press **Menu Button**.

b. From Menu screen, press **Softkey** by **Bolus A** or **Bolus B**.

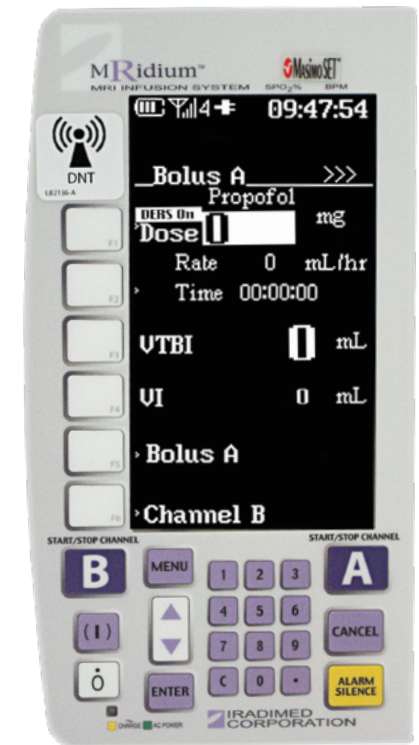
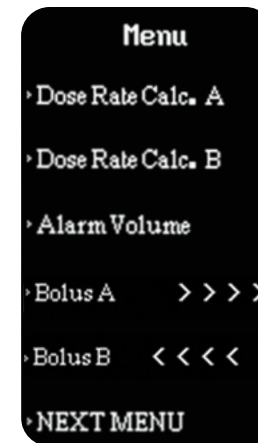
c. Press **Dose** Softkey.

d. Program dose using **Numeric Keypad**

e. **PRESS** the **TIME** button, program time using **Numeric Keypad**.

- Enter the infusion time of 6 seconds (0.1 minutes) to 99 minutes.

f. Press **ENTER** to Start Bolus.



**Note:** Primary infusion will resume following completion of bolus.

\*Bolus option ONLY available if enabled by facility pharmacy.

# KVO (KEEP VEIN OPEN)

## 5 | Resuming Infusion During KVO

a. Press **Start/Stop A or B** (depending on channel in use) to return to running screen.

b. Press the **VTBI** Softkey.

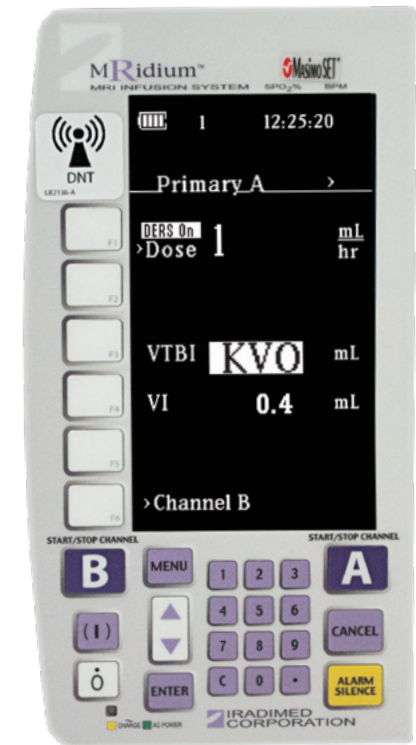
c. Program new VTBI using **Numeric Keypad**

d. Press **ENTER**

**Ready to Start** will appear at bottom of the screen.



e. Press **Start/Stop A or B Button** to resume infusion.



# ALARM MESSAGES



First, **Review ALARM Messages**, then **Press the ALARM SILENCE** button before proceeding.

## 6.1| Check Door Alarm

a. If Door is **OPEN**

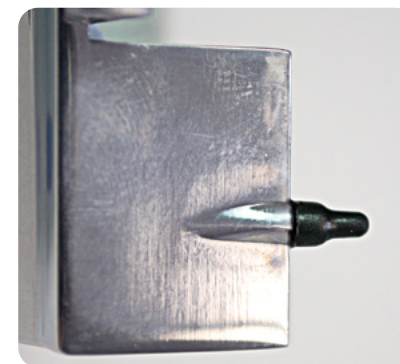
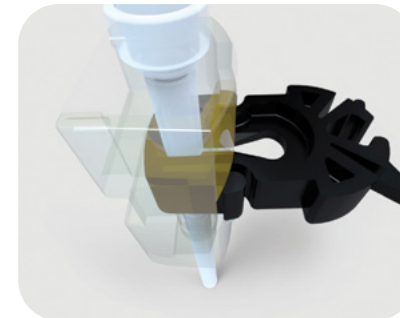
- Pull **BLACK FLOW CLAMP**, Press **ALARM SILENCE**.
- Set **BLACK FLOW CLAMP** to **Pull Through** Position and Reload.

b. If Door is **CLOSED**, verify Door **Handle** is **FULLY Latched**.

- Press in on Door **Handle**, **DO NOT** push down on **Purple Button**.
- Press **ALARM SILENCE**.

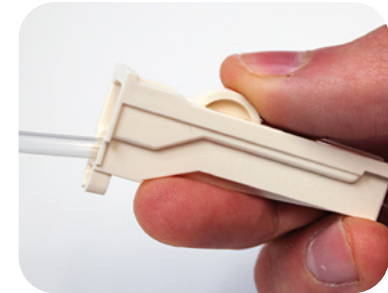
c. If Door is **CLOSED** and **FULLY Latched**, Check **Door Pin** Condition.

- If **Door Pin** damaged or missing, remove pump from use.
- Contact facility Biomedical Department for repair.



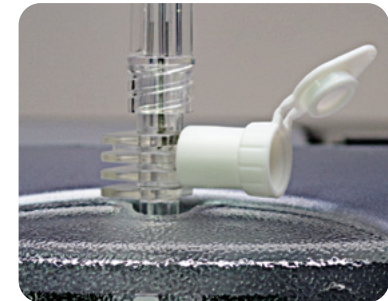
## 6.2| PT Occlusion Alarm

Alarm will sound if occlusion between the pump and patient occurs. Check between the pump and patient to assure that **All Clamps** have been **Opened** and fluid flow is permitted.



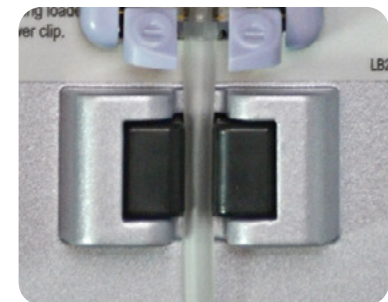
## 6.3| Inlet Occlusion Alarm

Alarm will sound if an occlusion has been detected between the fluid source and the pump. Check between the IV fluids and the pump to assure that all **Clamps/Vents** are **Opened** and no tubing is **Kinked or Restricted**.



## 6.4| Bubble Detected Alarm

Alarm will sound if an air bubble is in the IV Set. Open the pump door, remove the set, follow the facility's protocol on removing air. Re-install IV set by repeating **Steps 1.5** and secure tubing through **Bubble Detector**.



# ALERT MESSAGES

## 7.1| Rate Too High

<b>Visual Message</b>	Calculated rate exceeds the pump maximum infusion rate of 1,400mL/hr.
<b>Resolution</b>	<b>During Bolus Setup:</b> Check "Time" settings and adjust as necessary. Typically the "Time" value needs to be reviewed and increased if appropriate.

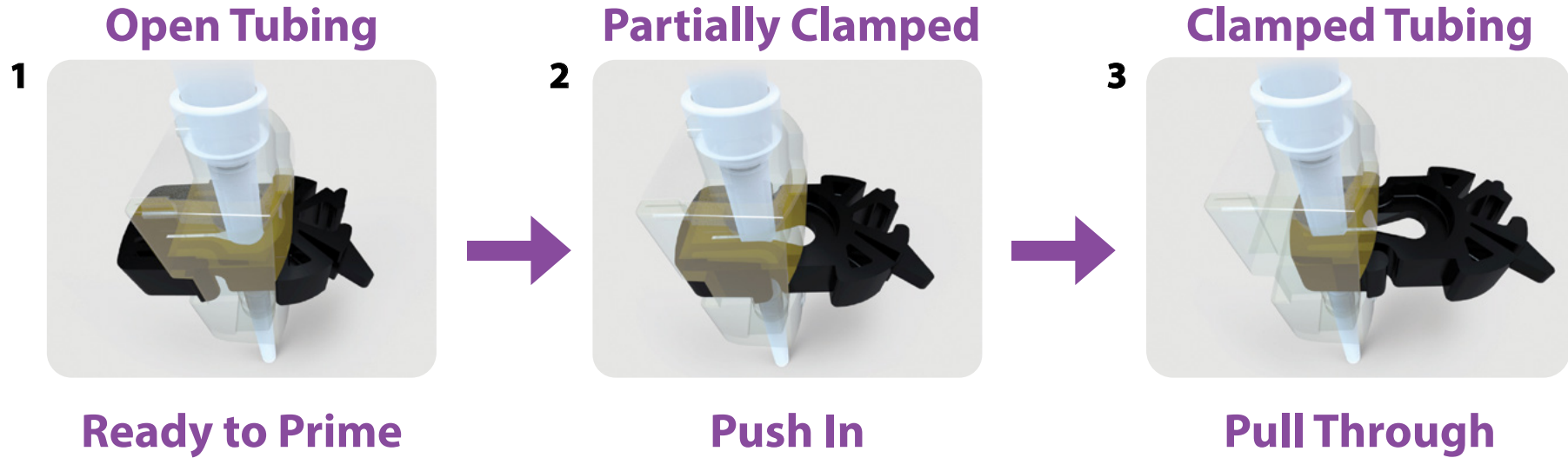
## 7.2| Rate Too Low

<b>Visual Message</b>	Calculated rate is below the pump minimum infusion rate of 0.1mL/hr.
<b>Resolution</b>	<b>During Bolus Setup:</b> Check "Time" settings and adjust as necessary. Typically the "Time" value needs to be reviewed and decreased if appropriate.

If **ALARMS** persist or other technical issues not mentioned in this guide, Remove Pump from use and contact your facility's Biomedical Department and/or your Bayer Radiology Service Team engineer.



# ALWAYS BE AWARE OF THE FLOW CLAMP POSITION







Full product technical specifications are available from your Bayer MRI Business manager.

Refer to MRidium1138 Operation Manual for further instruction.

Information subject to change.

©IRadimed Corporation 2020 - All rights reserved



1025 Willa Springs Drive, Winter Springs, FL 32708 | (407) 677-8022



Bayer Australia Ltd  
875 Pacific Highway,  
Pymble NSW 2073, Australia

More information on  
[radiologysolutions.bayer.com](http://radiologysolutions.bayer.com)

Authorised Australian Representative

Imaxeon Pty Ltd  
Rydalmere Metro Centre Unit 1, 38-46 South St  
Rydalmere NSW 2116 Australia

Phone: + 612 8845 4999  
Fax: + 612 8845 4936  
Customer Service: 1800 633 723